

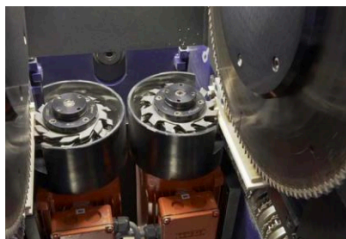
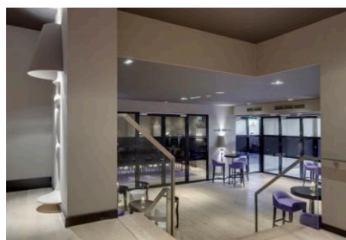
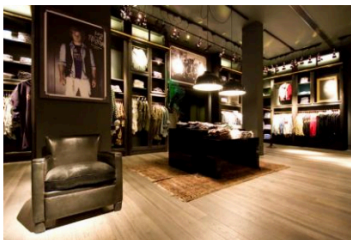


GREEN FACTS

WE AT **SIMPLY OAK™** GO TO EXTRAORDINARY LENGTHS TO GIVE OUR WOODEN FLOORING A UNIQUE LOOK. WE ARE PERFECTIONISTS WHEN IT COMES TO SELECTING THE RAW MATERIALS FOR OUR FLOORS AND TO EMPLOYING TRADITIONAL CRAFTSMANSHIP IN THEIR PRODUCTION. WE CHALLENGE CONVENTIONAL THINKING, AS WE PRESENT OUR PRODUCTS TO CLIENTS WORLDWIDE. ARCHITECTS AND DESIGNERS SPECIFICALLY DEMAND OUR FLOORING FOR USE IN COMMERCIAL PROJECTS SUCH AS HOTELS, RESTAURANTS, BARS, SHOPS, OFFICES, AND MORE. SIMPLY OAK™ WOODEN FLOORS ARE MADE IN THE MOST SUSTAINABLE MANNER POSSIBLE. THERE IS A CONTINUOUS EVALUATION OF THE PRODUCTION PROCESS FROM A TO Z, AND 100% GREEN ENERGY IS GENERATED BY THE CLEAN WASTE MATERIAL.

IT IS ALL ABOUT THE INGREDIENTS....

- WE OBTAIN WOOD ONLY FROM FORESTS THAT ARE RESPONSIBLY MANAGED AND FSC®- OR PEFC™-CERTIFIED.
- WE USE SOLVENT-FREE, WATER-BASED, NATURAL FINISHES THAT COMPLY WITH CURRENT ENVIRONMENTAL LAWS.
- STORAGE, DRYING, PROFILING, OILING, AND PACKAGING ARE COMPLETED AT ONE FACILITY — AVOIDING NEEDLESS TRANSPORTATION.
- THE ENERGY USED FOR PRODUCTION IS GENERATED FROM CLEAN TIMBER WASTE CREATED IN THE MILLING PROCESS. IT IS 100% RECYCLED GREEN ENERGY.
- WE BECAME ENERGY INDEPENDENT WHEN WE OPENED OUR OWN BIO PLANT IN 1997.
- OUR ELECTRICITY DEMAND IS LOWER THAN WHAT WE PRODUCE, SO THE SURPLUS ENERGY IS PUMPED INTO THE DUTCH NATIONAL GRID. THIS AMOUNTS TO APPROXIMATELY 1,300 KILOWATTS PER HOUR, AND IS ENOUGH TO SUPPLY 3,500 HOMES WITH POWER.
- WE *DO NOT* BELIEVE IN WASTE. GOOD QUALITY WOOD CHIPS ARE GIVEN A SECOND LIFE. BY-PRODUCTS SUCH AS PAPER, STEEL, COFFEE FILTERS, TEA BAGS, PLASTIC TIES, AND OTHER MAN-MADE MATERIALS ARE ALL GATHERED SEPARATELY AND ARE TRANSPORTED TO RECYCLING PLANTS IN CONJUNCTION WITH DELIVERIES TO CLIENTS.
- WE *DO* BELIEVE IN OPENNESS AND TRANSPARENCY. CLIENTS AND VISITORS ARE INVITED TO VISIT OUR FACTORY AND BIO-ENERGY PLANT. LET'S SHARE KNOWLEDGE AND EXPERIENCE.



Simply Beautiful. Simply Natural. Simply Oak.™